



LABORATORY LINES

ANALYZERS



Kalstein®

A different accompaniment, at your service





Kalstein®

A different accompaniment, at your service

OUR SERVICES

Benefits and Support

In Kalstein France, we take care of the full satisfaction of our customers, that is why we provide value-added services of the highest level based on our experience.



Online Inductions and Trainings

In any part of the world, receive your induction or training from our specialized team of engineers



Quick Response

Our work team is always available to response all your consults or questions, in order to support you in any situation.



#Letsgivemore ♥

Thanks to your purchase, a donation will be made to a non-profit foundation that fights against breast cancer and helps most vulnerable communities.



Technical Support

Enjoy of personalized advice for the correct preventive and corrective maintenance of your equipment, thanks to Kalstein's manuals and articles, special catalogues and video tutorials.



Delivery Logistics

We take care of all the necessary logistics for the dispatch of your goods, whether is by sea, land or air.



Kalstein Worldwide

With more than 25 years growing with our customers, Kalstein's multiformat and modern content, is now present in more than 10 countries and increasing.



KALSTEIN® Analyzer
Auto Chemistry Analyzer
Model YR06075



Features:

- ✓ 360 tests/hour, up to 540 tests/hour with ISE(optional)
- ✓ Grating system with 12 wavelengths
- ✓ Built-in bar code reader (optional)
- ✓ 8 steps washing system
- ✓ Bi-direction LIS interface

System Function:

- ✓ Automatic, Random Access
- ✓ STAT sample priority, available for all sample position
- ✓ Barcode Scanner for sample and reagent
- ✓ Bi-direction LIS interface (HL7)
- ✓ Throughput: 360 tests/hour (single and dual reagent)

Programming:

- ✓ Open system with user defined profiles and calculation assays

Sample/Reagent Handling:

- ✓ 2 reagent probes, 1 sample probe
- ✓ Sample tray: 100 positions
- ✓ Reagent tray: 80 refrigerated positions Refrigeration temperature: 2 ~ 1 0°C Reagent volume: 20 ~ 350 µL, 1 µL adjustable R1: 150 ~ 350 µL, 1 µL adjustable
- ✓ R2: 20 ~ 250 µL, 1 µL adjustable
- ✓ Support R3 and R4 Sample volume: 2 ~ 45 µL, 0.1 µL adjustable
- ✓ Sample and Reagent probe: Collision protection, liquid level detection and inventory checking
- ✓ Probe cleaning Automatic washing both interior and exterior, carryover <0.1 %
- ✓ Pre-heating for reagent
- ✓ Auto dilution: 3-150 times
- ✓ Built-in reagent/sample bar code reader (optional)

Principle:

- ✓ Up to 540 tests/hour with ISE (< Na□ c1·) Colorimetric, Turbidimetric

Methodology:

- ✓ Discrepant Value
- ✓ Single/Dual/Triple/Quadruple reagent chemistries
- ✓ Monochromatic/Biochromatic



#Letsgivemore ♥

Thanks to your purchase, a donation will be made to a non-profit foundation that fights against breast cancer and helps most vulnerable communities.



All rights reserved © KALSTEIN France S. A. S.,
 2 Rue Jean Lantier • 75001 Paris •
 +33 1 78 95 87 89 / +33 6 80 76 07 10 •
<https://kalstein.eu>
KALSTEIN FRANCE, S. A. S



KALSTEIN® Analyzer
Auto Chemistry Analyzer
Model YR06075



Reaction System:

- ✓ Reaction positions: 100 cuvettes Cuvette: Optical length 5mm Reaction volume: 150 ~ 500ul Reaction temperature: 37°C, ±0.1 °C 2 mixing probes
- ✓ 8 steps auto-washing system

Measuring and Optical System:

- ✓ Light Source: Halogen tungsten lamp Photometer: Grating photometry Wavelengths: 340nm,405nm, 50nm,505nm,540nm,570nm,600nm, 635nm,670nm,700nm,760nm,795nm
- ✓ Absorption range: 0~ 2.500Ab
- ✓ Resolution: 0.0001Abs

Working Condition:

- ✓ Power supply: 100 ~ 240 V,AC 50/60 Hz,1500w Temperature: 10°C ~ 30°C
- ✓ Humidity: 40% ~ 85%
- ✓ Water consumption: S:20 L/hour
- ✓ Dimension: 1150mm(L)*726.5mm(W)*1150mm(H)



#Letsgivemore ♥

Thanks to your purchase, a donation will be made to a non-profit foundation that fights against breast cancer and helps most vulnerable communities.



All rights reserved © KALSTEIN France S. A. S.,
 2 Rue Jean Lantier • 75001 Paris •
 +33 1 78 95 87 89 / +33 6 80 76 07 10 •
<https://kalstein.eu>
 KALSTEIN FRANCE, S. A. S



KALSTEIN® Analyzer
Auto Chemistry Analyzer
Model YR06075



Reagent System:

- ✓ Multi-functional reagent probe:
- ✓ Interior and exterior probe washing
- ✓ Liquid level detection
- ✓ Collision protection
- ✓ Inventory checking
- ✓ Reagent volume as low as 20 μ l
- ✓ Probe depth adjust automatically

Multi-functional sample probe:

- ✓ Interior and exterior probe washing
- ✓ Liquid level detection
- ✓ Collision protection
- ✓ Probe depth adjust automatically
- ✓ Sample volume as low as 2 μ l



Refrigerated reagent tray:

- ✓ 80 reagent positions for R1,R2,R3,R4
- ✓ Compatible with Hitachi reagent bottles
- ✓ 24 hours non-stop cooling with Peltier element
- ✓ Ready-to-use stable reagent
- ✓ Built-in reagent bar code reader (optional)



Multi-functional sample tray:

- ✓ 100 sample positions
- ✓ 7 virtual sample disks
- ✓ Support standard tube, primary tube, EP tube
- ✓ Automatic dilution of high concentration sample
- ✓ Automatic rerun
- ✓ Built-in sample bar code reader (optional))



#Letsgivemore ♥

Thanks to your purchase, a donation will be made to a non-profit foundation that fights against breast cancer and helps most vulnerable communities.



All rights reserved © KALSTEIN France S. A. S.,
 2 Rue Jean Lantier • 75001 Paris •
 +33 1 78 95 87 89 / +33 6 80 76 07 10 •
<https://kalstein.eu>
KALSTEIN FRANCE, S. A. S



KALSTEIN® Analyzer
Auto Chemistry Analyzer
Model YR06075



Optical System:

- ✓ Unique water cooling system for light source
- ✓ Maximum stabilized optical system
- ✓ Sealed optical system to prevent any dust and disturbance
- ✓ Reversed optics, grating photometry
- ✓ Maintenance free

Operation System:



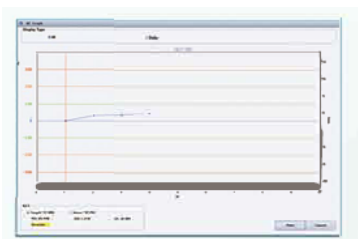
Reaction Curve:

- ✓ Substrate exhaust limit detection
- ✓ Equilibrium point auto search



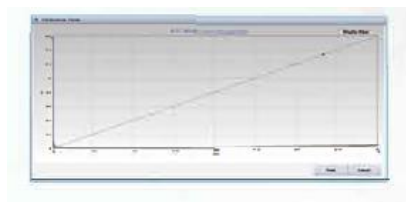
ISE Module:

- ✓ Optional selection of K/Na⁺ Cl⁻
- ✓ Throughput: up to 270 tests per hour
- ✓ 6 months shelf life



QC Graph:

- ✓ QC type: real-time QC, daily QC, day to day QC
- ✓ Control rule: multi-rules QC, intelligent QC alarm



Calibration Setting:

- ✓ Refitting : fitting different types of calibration curve with a certain standard data, thus choosing the best calibration curve



#Letsgivemore ♥

Thanks to your purchase, a donation will be made to a non-profit foundation that fights against breast cancer and helps most vulnerable communities.



All rights reserved © KALSTEIN France S. A. S.,
 2 Rue Jean Lantier • 75001 Paris •
 +33 1 78 95 87 89 / +33 6 80 76 07 10 •
<https://kalstein.eu>
KALSTEIN FRANCE, S. A. S



KALSTEIN® Analyzer

Auto Chemistry Analyzer

Model YR06075



Reaction Tray:

- ✓ Optimized test sequence to reduce carryover
- ✓ Total reaction volume as low as 150µl
- ✓ Contains 100 reaction cuvettes
- ✓ Real direct heating
- ✓ Real-time display of reaction tray temperature

High performance mixer design:

- ✓ Two independent mixers
- ✓ Optimized homogenization in minimum time
- ✓ Standardized mixing procedures
- ✓ Function immediately after sample and reagent pipetted in

Statics:

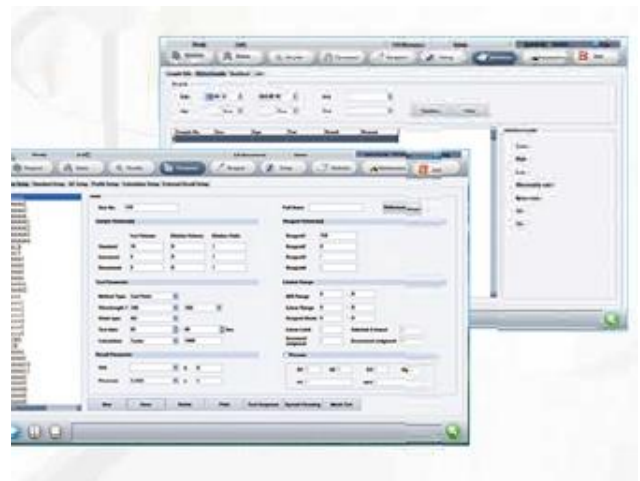
- ✓ Calculate the mean value, standard deviation and coefficient of variation
- ✓ Statistics of reagent usage
- ✓ Statistics of test volume

Unique washing station:

- ✓ High precision washing liquid control to guarantee washing function
- ✓ Washing solution pre-heating to prevent any carryover
- ✓ Maintain ideal temperature for testing
- ✓ 8 steps auto-washing
- ✓ Separate drainage for high and low concentration waste
- ✓ Ceramic syringe for auto washing system, high accuracy

Parameter Setting:

- ✓ Different levels of user permission
- ✓ Different reference range according to gender and age
- ✓ Calculated items available
- ✓ Manual items input available
- ✓ Automatic rerun
- ✓ 3-150 times auto dilution



#Letsgivemore ♥

Thanks to your purchase, a donation will be made to a non-profit foundation that fights against breast cancer and helps most vulnerable communities.



All rights reserved © KALSTEIN France S. A. S.,
2 Rue Jean Lantier • 75001 Paris •
+33 1 78 95 87 89 / +33 6 80 76 07 10 •
<https://kalstein.eu>
KALSTEIN FRANCE, S. A. S





 **Kalstein**[®]
A different accompaniment, at your service

#LETSGIVEMORE 

**WITH THE
ACQUISITION
OF A KALSTEIN
EQUIPMENT**

YOU MAKE A CONTRIBUTION TO:



**Fundación
Jacinto Convit**

<https://www.jacintoconvit.org/>



<https://onetreepanted.org>



Humatem

Solidarité et coopération
biomédicale

<https://www.humatem.org/>



**MANIAPURE
FOUNDATION USA**

<https://www.maniapurefoundation.org/>

Articles Kalstein
(Social Networks and Official Websites)



Kalstein Blog
Not just be informed, be fully informed

The 3 articles of the week!

Read more on Kalstein's social medias or official websites
<https://kalstein.eu/articles>



1
Read this ARTICLE NOW

How does the climate affect your microscope?

microscope is an instrument that allows observing and measuring small objects. This is achieved through the use of lenses or a system of mirrors that collect and focus light from the object being observed.

Kalstein Blog

Article of the week:
How does the climate affect your microscope?

Read more on Kalstein's social medias or official websites
<https://kalstein.eu/articles>



2
Read this ARTICLE NOW

What is the importance of the laboratory refrigerator?

Refrigerator is a device that is one of the most common equipment that is used to maintain, in a controlled environment (refrigerated space), various fluids and substances.

Kalstein Blog

Article of the week:
What is the importance of the laboratory refrigerator?

Read more on Kalstein's social medias or official websites
<https://kalstein.eu/articles>

Kalstein Training Videos
(Youtube Channel and Official Websites)



Kalstein France - Jacinto Convit Foundation / Allianc...
23 views • 3 years ago



Kalstein's Microscopes
445 views • 1 week ago



PARIS - FRANCE
HEADQUARTER
2 Rue Jean Lantier
75001 Paris - France

Tlf: +33 (0) 01 78 95 87 89
Cel: +33 (0) 6 80 76 07 10
sales@kalstein.eu

<https://kalstein.eu/>
<https://www.kalstein.fr/>

