



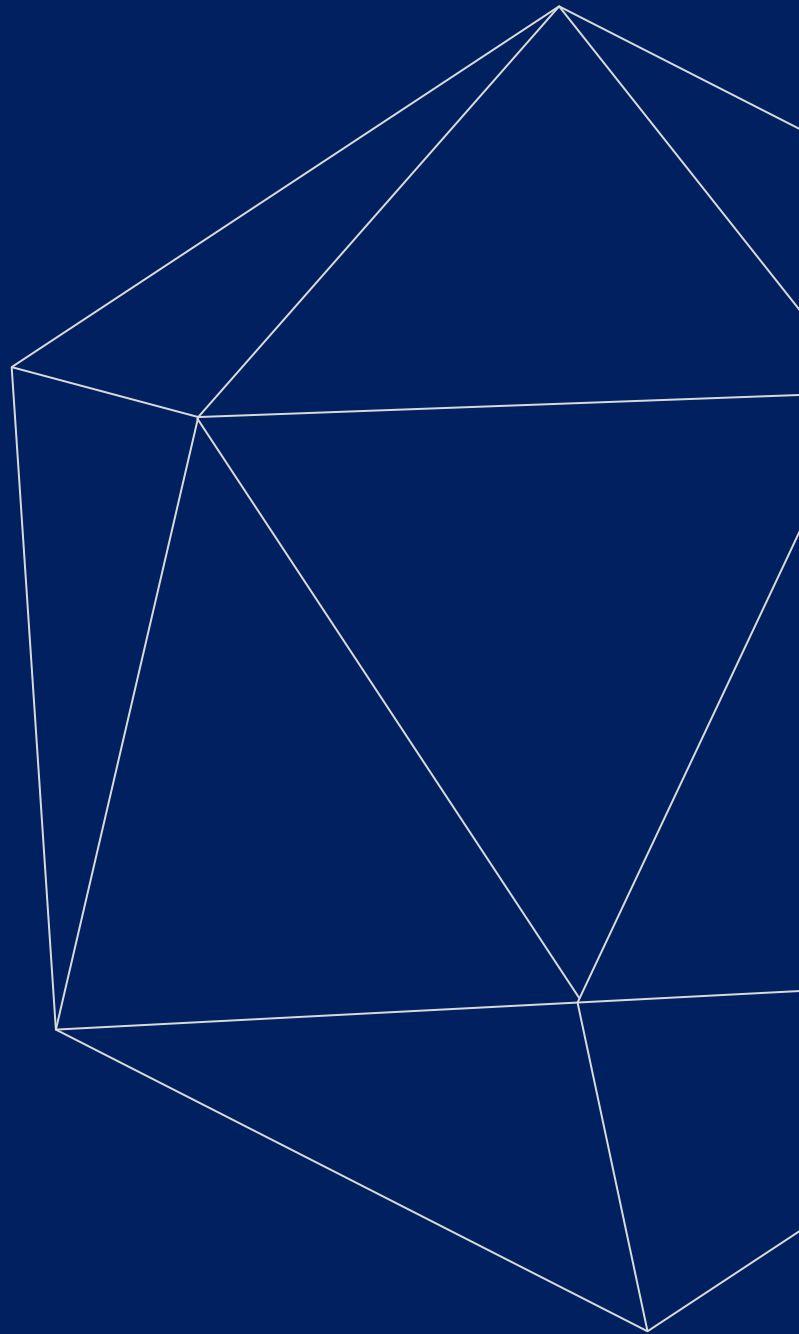
LABORATORY LINES

ALL-ELECTRONIC MICROSCOPE



Kalstein®

A different accompaniment, at your service





Kalstein®

A different accompaniment, at your service

OUR SERVICES

Benefits and Support

In Kalstein France, we take care of the full satisfaction of our customers, that is why we provide value-added services of the highest level based on our experience.



Online Inductions and Trainings

In any part of the world, receive your induction or training from our specialized team of engineers



Quick Response

Our work team is always available to response all your consults or questions, in order to support you in any situation.



#Letsgivemore ♥

Thanks to your purchase, a donation will be made to a non-profit foundation that fights against breast cancer and helps most vulnerable communities.



Technical Support

Enjoy of personalized advice for the correct preventive and corrective maintenance of your equipment, thanks to Kalstein's manuals and articles, special catalogues and video tutorials.



Delivery Logistics

We take care of all the necessary logistics for the dispatch of your goods, whether is by sea, land or air.

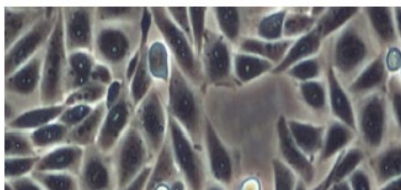
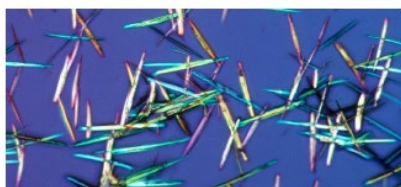
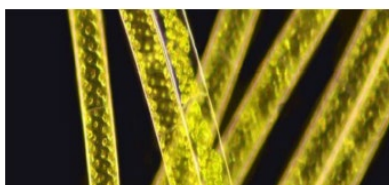
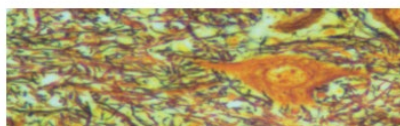
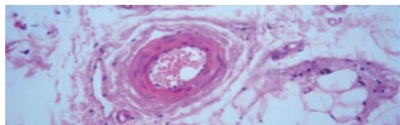


Kalstein Worldwide

With more than 25 years growing with our customers, Kalstein's multiformat and modern content, is now present in more than 10 countries and increasing.



All-electronic Microscope Model YR0268A



#Letsgivemore

Thanks to your purchase, a donation will be made to a non-profit foundation that fights against breast cancer and helps most vulnerable communities.

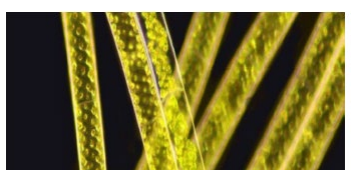
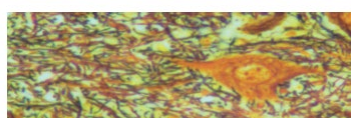
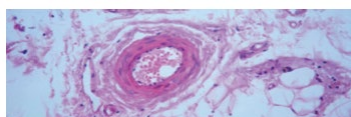


All rights reserved © KALSTEIN France S. A. S.,
Optimum Business Center 450 Rue Baden Powell,
• 34000 Montpellier, France.
Tél: +33 467158849 / +33 680760710 / +33 663810023
<https://kalstein.eu>
KALSTEIN FRANCE, S.A. S



All-electronic Microscope

Model YR0268A



Specifications

ITEM		YR0268A
Main Body	Optical System	NIS Infinite Optical System
	Nosepiece	Electric Sixtuple Nosepiece
	Focus System	Low-hand electric focusing mechanism, independent operation of left and right hand wheels Three speed adjustment, focusing range 30mm Repeat positioning accuracy: 0.1µm, electric escape and recovery mechanism
	Transmitted illumination	3W LED, electric control of transmitted light source brightness, light intensity management function
	Display Screen	Touch control screen
Viewing Head	Seidentopf Trinocular Viewing Head	Eyepiece/port: 100/0, 20/80, 0/100, Inclined at 30°, interpupillary 47-78mm
Eyepiece		·SW10X(25) ·SW10X(22) ·EW12.5X(17.5) ·WF15X(16) ·WF20X(12)
Stage	Motor Stage	High-precision motor XYZ stage (stroke: X axis, 125mm; Y axis, 75mm; Z axis, 35mm), repeat positioning accuracy ±1.5µm, maximum speed 20mm/s
Condenser	Bright-field Condenser	Universal Condenser (4X-100X)
	Turret Condenser	Phase Contrast Turret Condenser ·DIC Turret Condenser
	Dark-field Condenser	Dark-field Condenser (Dry)·Dark-field Condenser (Oil)·
FL-VI Epi-fluorescence Attachment	Fluorescence Epi-illuminator	With field diaphragm and aperture diaphragm, density film can be used, Kohler illumination system, with UV protective screen
	Fluorescence turntable	Six-hole fluoroscope turntable
	Fluorescent light source	·OSRAM mercury lamp HBO 100W / Metal halide light source 75W/ Four- color LED fluorescence 5W
Realizable Observation Mode		Bright field, Epi-fluorescence, Dark field, Phase contrast, Simple polarization, DIC



#Let'sgivemore

Thanks to your purchase, a donation will be made to a non-profit foundation that fights against breast cancer and helps most vulnerable communities.



All rights reserved © KALSTEIN France S. A. S.,
Optimum Business Center 450 Rue Baden Powell,
• 34000 Montpellier, France.
Tél: +33 467158849 / +33 680760710/ +33 663810023
<https://kalstein.eu>
KALSTEIN FRANCE, S.A. S



All-Electronic Microscope

Model YR0268A

High Accuracy and Easy Operation

The motor stage can control the movement in X, Y and Z directions.

Only one USB cable is needed to connect the computer and the built-in controller to realize the integrated electric control; The build-in z-axis adopts high-precision motor screw structure to ensure the nano-level z-axis layer cutting scanning; The imported screw rod adopts extrusion process, which has the characteristics of enhancing consistency and eliminating reverse clearance error; Flexible stage control program can meet a variety of sports needs. The supporting control rocker has powerful function and convenient operation.



Motor Stage for YR0268A		
Name	Specific parameters	
	X、Y	Z
Maximum stroke	125*75(mm)	35mm
Minimum resolution	0.1um	0.01um
Relative repeat positioning accuracy	±1.5um	±0.1um
Maximum speed	20mm/s	4.8mm/s
Dimensions	275*239*44.5(mm)	—
limit	Software limit +Mechanical limit +Photoelectric limit	
Joystick	Three-dimensional control joystick, 3 speeds	
Communication	USB2.0 (Virtual serial port)	
Communication rate	Adaptive (recommended 115200)	



#Let'sgivemore

Thanks to your purchase, a donation will be made to a non-profit foundation that fights against breast cancer and helps most vulnerable communities.



All rights reserved © KALSTEIN France S. A. S.,
Optimum Business Center 450 Rue Baden Powell,
• 34000 Montpellier, France.
Tél: +33 467158849 / +33 680760710 / +33 663810023
<https://kalstein.eu>
KALSTEIN FRANCE, S.A. S



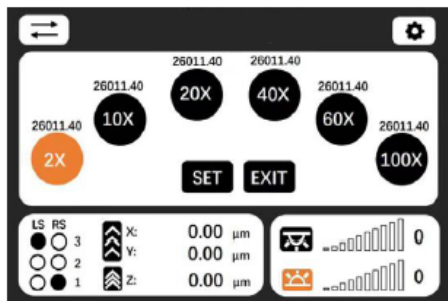
All-Electronic Microscope

Model YR0268A

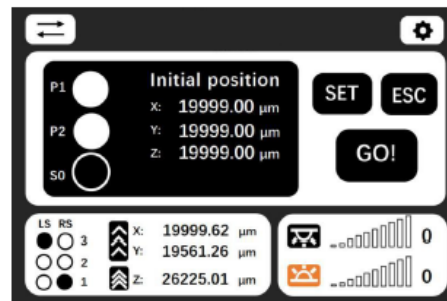


Touch control scree, saving space, flexible control.

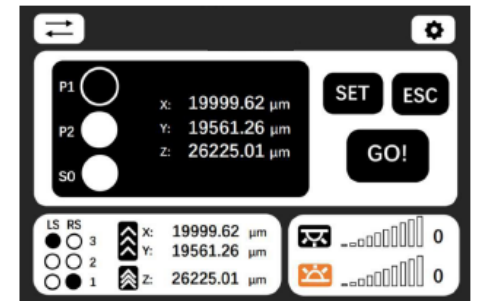
The front touch control screen integrated with the microscope does not occupy the desktop position. The interface and the operation are simple, and the programmable control simplifies the repeated observation and imaging process. Powerful functions; three-axis coordinate display, speed gear display, objectives electric switching, objectives dual-hole orientation switching, position memory and return, relative coordinate display, objectives parfocal compensation, temporary upper limit setting, stage escape and recovery, display screen day/night mode, etc.



Objectives focus compensation: memorize the focal plane position of the objectives at each hole position. When the objective is converted, the Z-axis will automatically compensate the focusing position of each objectives.



Location memory and return: 2 location memory points and 1 location memory point can be set. The initial position point is used to mark the key observation position.



Stage escape and return: it can be at the current position and relative coordinate zero point. It is convenient to change the slice in the process of using fast stage mobility.

Nomis plus electric microscope

Provide integrated control for the microscope, camera, motor stage and each part of the components, provide motorized control, autofocus, sequence scanning, fixed-point scanning, curved surface fitting scanning, full field of view focus scanning and other functions. Intuitive and simple interactive interface, fast and flexible data acquisition method, combined with NMIS basic imaging analysis software, realize the functions of measurement, synthesis and data recording.



Full-field scanning imaging



#Let'sgivemore

Thanks to your purchase, a donation will be made to a non-profit foundation that fights against breast cancer and helps most vulnerable communities.



All rights reserved © KALSTEIN France S. A. S.,
Optimum Business Center 450 Rue Baden Powell,
• 34000 Montpellier, France.
Tél: +33 467158849 / +33 680760710 / +33 663810023
<https://kalstein.eu>
KALSTEIN FRANCE, S.A. S





 **Kalstein**[®]
A different accompaniment, at your service

#LETSGIVEMORE 

**WITH THE
ACQUISITION
OF A KALSTEIN
EQUIPMENT**

YOU MAKE A CONTRIBUTION TO:



**Fundación
Jacinto Convit**

<https://www.jacintoconvit.org/>



<https://onetreepanted.org>



Humatem

Solidarité et coopération
biomédicale

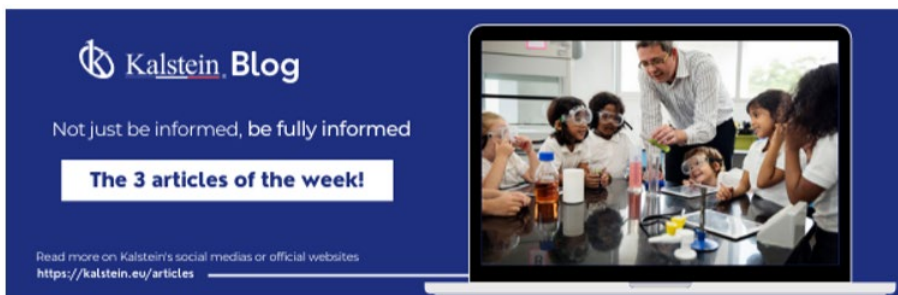
<https://www.humatem.org/>



**MANIAPURE
FOUNDATION USA**

<https://www.maniapurefoundation.org/>

Articles Kalstein
(Social Networks and Official Websites)



Kalstein Blog
Not just be informed, be fully informed

The 3 articles of the week!

Read more on Kalstein's social medias or official websites
<https://kalstein.eu/articles>

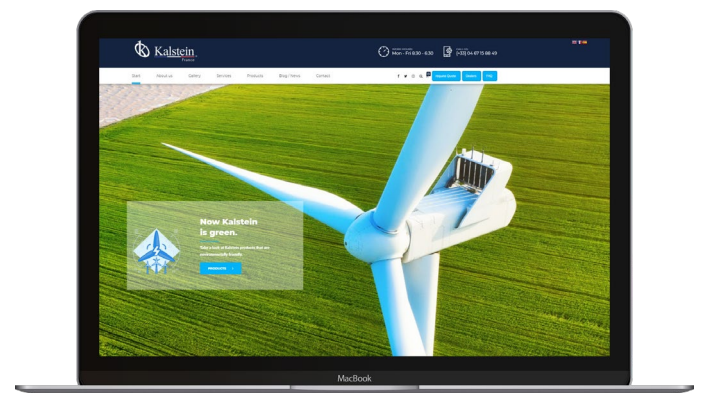


MONTPELLIER - FRANCE
HEADQUARTERS
Optimum Business Center,
450 Rue Baden Powell,
34000 Montpellier - France.

Fax: +33 (0) 4 67 15 88 49
Tif: +33 (0) 6 80 76 07 10
sales@kalstein.eu

<https://kalstein.eu/>
<https://www.kalstein.fr/>

Official Websites for Latin America.




1
Read this ARTICLE NOW

How does the climate affect your microscope?

microscope is an instrument that allows observing and measuring objects that are too small to be seen with the naked eye. This is achieved through a complex system of lenses, which form

Kalstein Blog

Article of the week:
How does the climate affect your microscope?

Read more on Kalstein's social medias or official websites
<https://kalstein.eu/articles>



2
Read this ARTICLE NOW

What is the importance of the laboratory refrigerator?

refrigerator in a laboratory is one of the most important equipment. It is used to maintain, in a controlled environment (refrigerated space), various fluids and substances.

Kalstein Blog

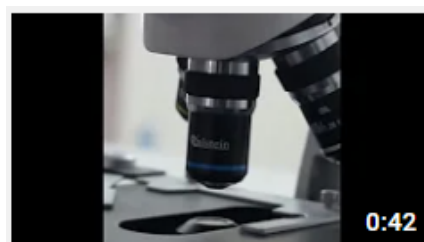
Article of the week:
What is the importance of the laboratory refrigerator?

Read more on Kalstein's social medias or official websites
<https://kalstein.eu/articles>

Kalstein Training Videos
(Youtube Channel and Official Websites)



Kalstein France - Jacinto Convit Foundation / Allianc...
23 views • 3 years ago



Kalstein's Microscopes
445 views • 1 week ago